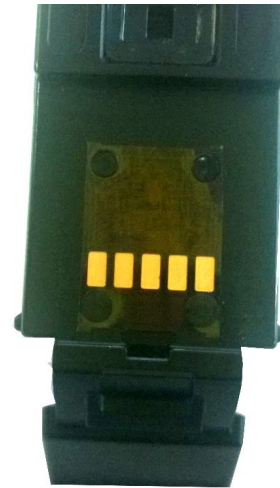


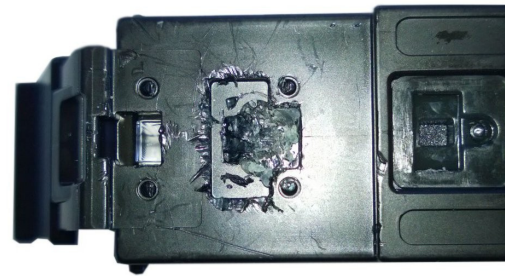
## Ausjet PGI-650XL / 651XL Replacement Chip Installation

1) The OEM chip is flexible and is held in position by four posts and silicon located under the chip.

To install the replacement chip you first need to remove the OEM chip. To do this cut the tops of the posts in each corner with a knife and remove the chip. Then remove the silicon that was located under the chip.



2) The photo to the right shows the cartridge after removal of the OEM chip and silicon. The replacement chip will not fit into the location if the majority of the existing silicon has not been removed.



3) Locate the four posts again and apply a small amount of glue to each corner of the post. Next install the chip onto the four posts ensuring it is flat against the cartridge and aligned correctly.

