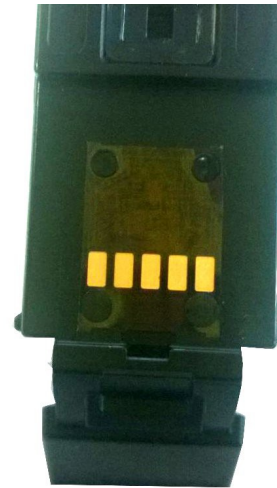


# Ausjet PGI-650 / 651 Standard Replacement Chip Installation

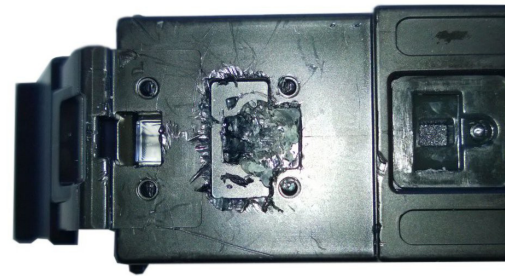
**The Ausjet chip is thicker than the OEM chip. Therefore the cartridge needs to be modified to allow the use of the Ausjet chip.**

1) The OEM chip is flexible and is held in position by four posts with silicon and a plastic support located under the chip.

To install the replacement chip you first need to remove the OEM chip. To do this cut the tops of the posts in each corner with a knife and remove the chip. Then remove the silicon and the support that is located under the chip.



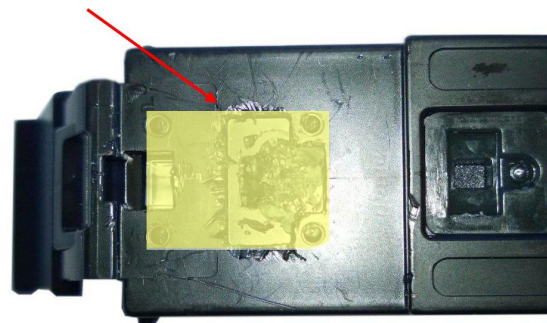
2) The photo to the right shows the cartridge after removal of the OEM chip and silicon.



3) The highlighted area must be shaved (0.2mm – 0.4mm) down to reduce the thickness of the plastic. It's less than half a mm but it makes all the difference when installing the cartridge in the printer. Make a note of the lug/post positions before you shave them off.

Add a small quantity of glue to the corners of the chip. Place the chip in the correct position ensuring its aligned correctly. *Using another cartridge with a chip installed as a guide is recommended.*

Reduce 0.4mm



4) Photo of attached chip. It is recommended to test the cartridge in a printer to ensure the chip is correctly installed.

